

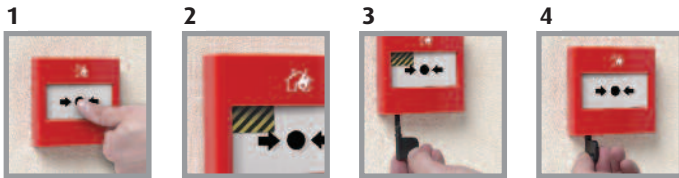
EMERGENCY STOP BUTTON



EN54-11 Cert No. 653a/01
Series 01 ONLY



Patent Nos. 2 406 717/2 430 554
Euro. Pat. App. No. 04255903.9

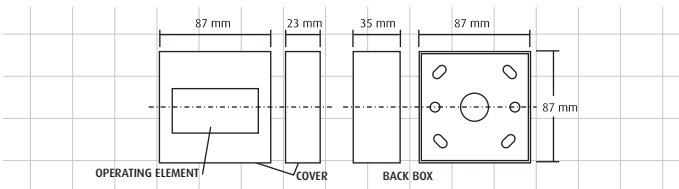


- 1) Positive action – mimics the feel of breaking glass
- 2) A warning indicator drops in to view when the call point is activated
- 3) To reset a simple key is inserted in to the bottom of the call point
- 4) A quick turn of the key and the call point is reset and ready for use again straight away

FEATURES

- EN54-11 approved (Cert No. 653a/01)
- IP67 Waterproof and addressable models available
- Glass appearance maintains operator deterrence
- Positive activation that mimics the feel of breaking glass
- Visible warning flag confirms activation
- Simple key to reset operating element – no broken glass
- No glass elements to break, lose or incorrectly fit during installation
- Complete functional test with every activation
- Extremely attractive, high value look and feel
- Low profile, heavy-duty terminations – Two built-in resistor values
- Available in five colours

▼ ReSet dimensions and technical information



EM Stop Button

The EM stop button is a unique manual call point that mimics the feel of breaking glass whilst offering the user the benefits and environmental advantages of a re-settable operating element.

The EM stop uses a simple yet ingenious patented mechanism which consists of a rigid plastic operating element and an over center spring mechanism. This arrangement provides real action on operation and simulates break glass activation.

An activation indicator drops into view at the top of the window after the button has been operated. The unit is then simply reset with a key and is ready for re-use straight away.

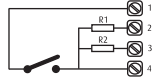
APPLICATIONS

It is safe for use in areas where glass cannot be used, e.g. food processing plants and swimming/leisure centres.

As the unit can be simply reset it provides an ideal solution for areas that suffer from a high number of false activations such as schools, shopping centres and other public places.

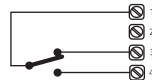
ELECTRICAL ARRANGEMENT

Series 01



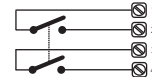
Series 01 denotes a ReSet call point that will interface with most conventional fire alarm systems. It is fitted with two internal resistors 470 (R1) and 680 (R2) ohms. These are easily accessed through the installer terminals as illustrated.

Series 02



Series 02 denotes a ReSet call point that is fitted with a single pole changeover switch both the normally open and normally closed contacts are easily accessed through the installer terminals as illustrated.

Series 03



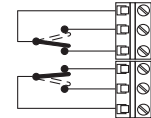
Series 03 denotes a ReSet call point that is fitted with a double pole normally open switch easily accessed through the installer terminals as illustrated.

Series 04



Series 04 denotes a ReSet call point that is fitted with a double pole normally closed switch easily accessed through the installer as illustrated.

Series 11



Series 11 denotes a ReSet call point that incorporates two independent single pole changeover switches providing double pole changeover contacts. Easily accessed through the installer terminals as illustrated.

Switch arrangements shown with ReSet in standby.

Technical Specifications

Current Rating (All Series)	3 Amps 12 – 24V DC
Current Rating	3 Amps 125 – 250V AC
Low Current Rating* (All Series)	1-100 mA 5 – 12V DC 0.1 Amps 125 - 250V AC
Housing and Mounting Box Material	Polycarbonate
Electrical Contact Material	Silver plated brass
Operating Temperature	-20°C to +65°C
Installation Terminal Conductor Size	0.5mm – 2.5mm
Colours	Red, Yellow, Green, Blue & White
Mounting	Flush or surface with back box