

# GoldSeal GSW-230

## Datasheet

Normally Closed, Screwed,  
Brass Body, 230Vac



230Vac Power Input



WRAS Approved  
IP65 Rated



Normally Closed  
Safety Shutoff



1/2" to 2" Screwed  
Available For This  
Model

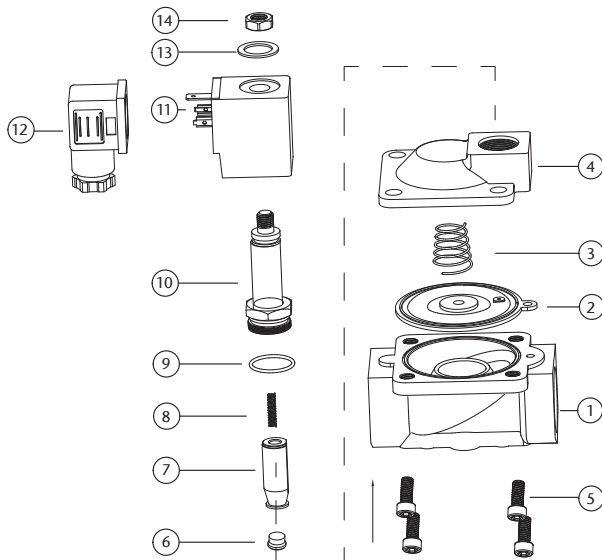
### Approvals



## Product Overview

Goldseal water solenoid valves are normally closed (N/C) and constructed with a durable brass body, two-way inlet and outlet ports.

## Parts Diagram

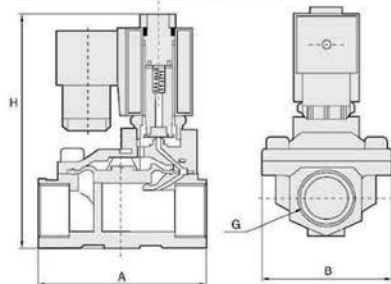
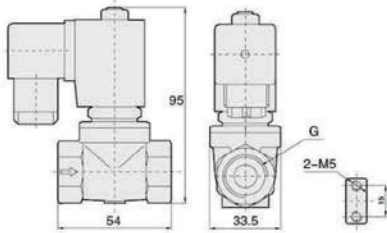


<b>(1) Valve Body</b>	Brass
<b>(2) Diaphragm</b>	EPDM
<b>(3) Diaphragm Spring</b>	Stainless Steel 304
<b>(4) Valve Cover</b>	Brass/Stainless Steel 316
<b>(5) Bolt</b>	Stainless Steel 302
<b>(6) Pilot Seal</b>	EPDM
<b>(7) Pilot</b>	Stainless Steel 1J117
<b>(8) Pilot Spring</b>	Stainless Steel 304
<b>(9) O Ring</b>	EPDM
<b>(10) Plunger Tube Unit</b>	Stainless Steel 304 + 1J117
<b>(11) Coil</b>	Enamelled Wire
<b>(12) Plug</b>	Nylon
<b>(13) Washer</b>	Stainless Steel 302
<b>(14) Lock Nut</b>	Stainless Steel 302

## Main Dimensions

Orifice: 13mm  
Port: 1/2"

Large Orifice  
See Table below



## Technical Specifications

Port Size	Orifice	CV Value	Pressure Difference (Bar)				Max. Temp. (°C)	VA AC 230V	W DC 24V	Partcode	Main Dimensions AxBxH(mm)
			Min.	Max. Working Pressure							
				Air / Gas	Water / Hot Liquid	Light Oil ≤20CST					
1/2"	13	4.5	0.5	16	16	120	22	13	GSW13-230VAC	66x48x112	
3/4"	20	7.6	0.5	16	16	120	22	13	GSW20-230VAC	75x58x118	
1"	25	12	0.5	16	16	120	22	13	GSW25-230VAC	96x70x131	
1.1/4"	35	22	0.5	16	16	120	22	13	GSW32-230VAC	131x96x146	
1.1/2"	40	30	0.5	16	16	120	22	13	GSW40-230VAC	131x96x146	
2"	50	48	0.5	16	16	120	22	13	GSW50-230VAC	165x120x167	

Find out more

**S&S Northern Ltd**

[www.snsnorthern.com](http://www.snsnorthern.com)

Head office:

Wallace Francis House, Barnes Wallis Way,  
Buckshaw Village, Lancashire, PR7 7JN

Tel: 01257 470983

Email: [info@snsnorthern.com](mailto:info@snsnorthern.com)

